

suites catalogue

Vuelo Sobre Bečići

ALK



content

| | | |
|--------------------|---|-----------|
| Vuelo Sobre Bečići | - | 2 |
| Suite type 1 | - | 6 |
| Suite type 2 | - | 8 |
| Suite type 3 | - | 12 |
| Suite type 4 | - | 14 |
| Suite type 5 | - | 18 |
| Suite type 6 | - | 20 |
| Suite type 7 | - | 24 |
| Suite type 8 | - | 26 |





Vuelo Sobre Bečići

| | |
|----------------------------------|-----------------------|
| Locality area | 3404,90m ² |
| Storey | Po+S+P+5 |
| Allowed gross area of the object | 9105,01m ² |

OBJECT

ABOVE-GROUND

| | |
|-------------------------|-----------------------|
| Total net object area | 7143.48m ² |
| Total gross object area | 8583.20m ² |

UNDER-GROUND

| | |
|-------------------------|-----------------------|
| Total net object area | 2464.83m ² |
| Total gross object area | 2657.33m ² |

TOTAL

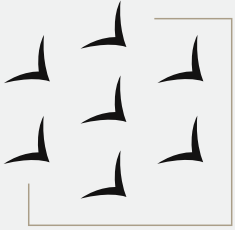
9608.31m² / 11240.74m²

TOTAL NUMBER OF SUITES 95

TOTAL NUMBER OF PARKING LOTS 108

| FLOOR | NET FLOOR AREA | GROSS FLOOR AREA | NUMBER OF ACCOMMODATION UNITS |
|--------------|-----------------------|-----------------------|-------------------------------|
| Cellar | 377,24m ² | 417,6m ² | / |
| Basement | 2087.59m ² | 2239.73m ² | / |
| Ground floor | 1271.26m ² | 1488.90m ² | 16 |
| I - floor | 1140.61m ² | 1358.46m ² | 17 |
| II - floor | 1135.52m ² | 1353.77m ² | 17 |
| III - floor | 1141.03m ² | 1358.63m ² | 17 |
| IV - floor | 1081.16m ² | 1323.59m ² | 15 |
| V - floor | 965.32m ² | 1208.29m ² | 13 |
| Flat roof | 408.58m ² | 491.75m ² | / |





Complex **Vuelo Sobre Becici** is a new residential complex located on the slope of Budva Riviera in Becici, Montenegro. The complex is ideal for those looking for a modern, luxurious, and comfortable living space, who want to enjoy the beautiful views and surroundings offered by Montenegro.

The location of the complex is very favorable, as it is positioned at a picturesque and ecologically clean place with a unique urban landscape, far away from city noise, and is surrounded by a whole variety of vegetation that creates a relaxing and peaceful atmosphere. Almost every suite is designed so that it has sea, mountain, and city views, which is a great advantage.

Complex offers special contents, such as a roof pool, sauna, and summer kitchen for relaxing moments with friends. On the underground floors of the building there is a parking lot with 105 parking places, separated storage rooms, and a gym. In addition, the complex has arranged yard with a playground, benches, and a fountain. Suite owners have separated access to their personal mini-yard.

All the suites are sold unfurnished, in refined final facing. All of the sites have air conditioning, equipped bathroom, and floor heating in the bathroom. Final works at the complex are expected to be finalized in 2024.

Tivat Airport is a 30-minute drive from the complex, while Podgorica Airport is an hour's drive from the complex.

Complex **VUELO SOBRE BECICI** is a perfect choice for the ones looking for a modern, luxurious, and comfortable place for living, and who want to enjoy beautiful views as well as the surroundings offered by Montenegro.





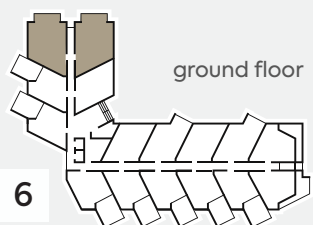
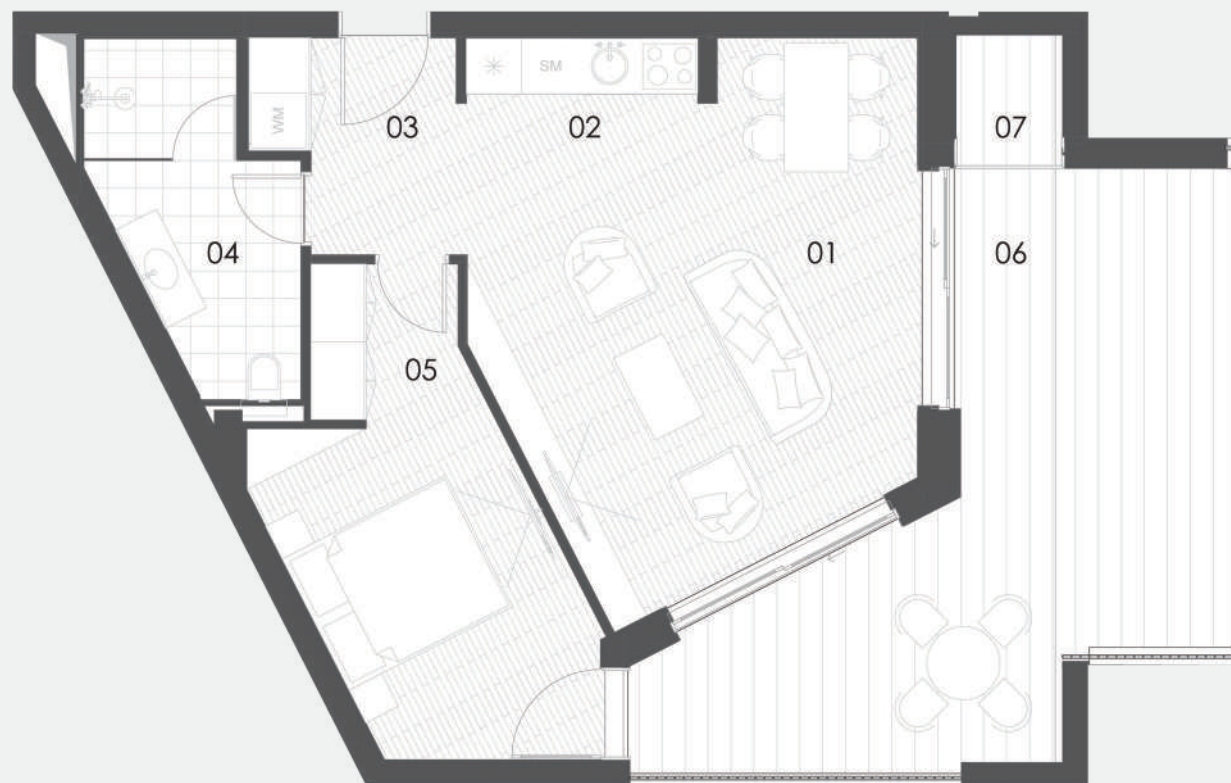
01 suite type 1

vuelo sobre bečići / 2023

ground floor
001 / 002

Total number of suites of this type | 2

| | |
|-----------------------------|---------------------------|
| 01 Living and dining room | 25.05m ² |
| 02 Kitchen | 1.50m ² |
| 03 Hallway | 4.55m ² |
| 04 Bathroom | 6.75m ² |
| 05 Bedroom | 13.55m ² |
| 06 Balcony | 26.15m ² |
| 07 Storage | 1.70m ² |
| TOTAL | 79.25m² |



ground floor

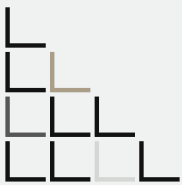
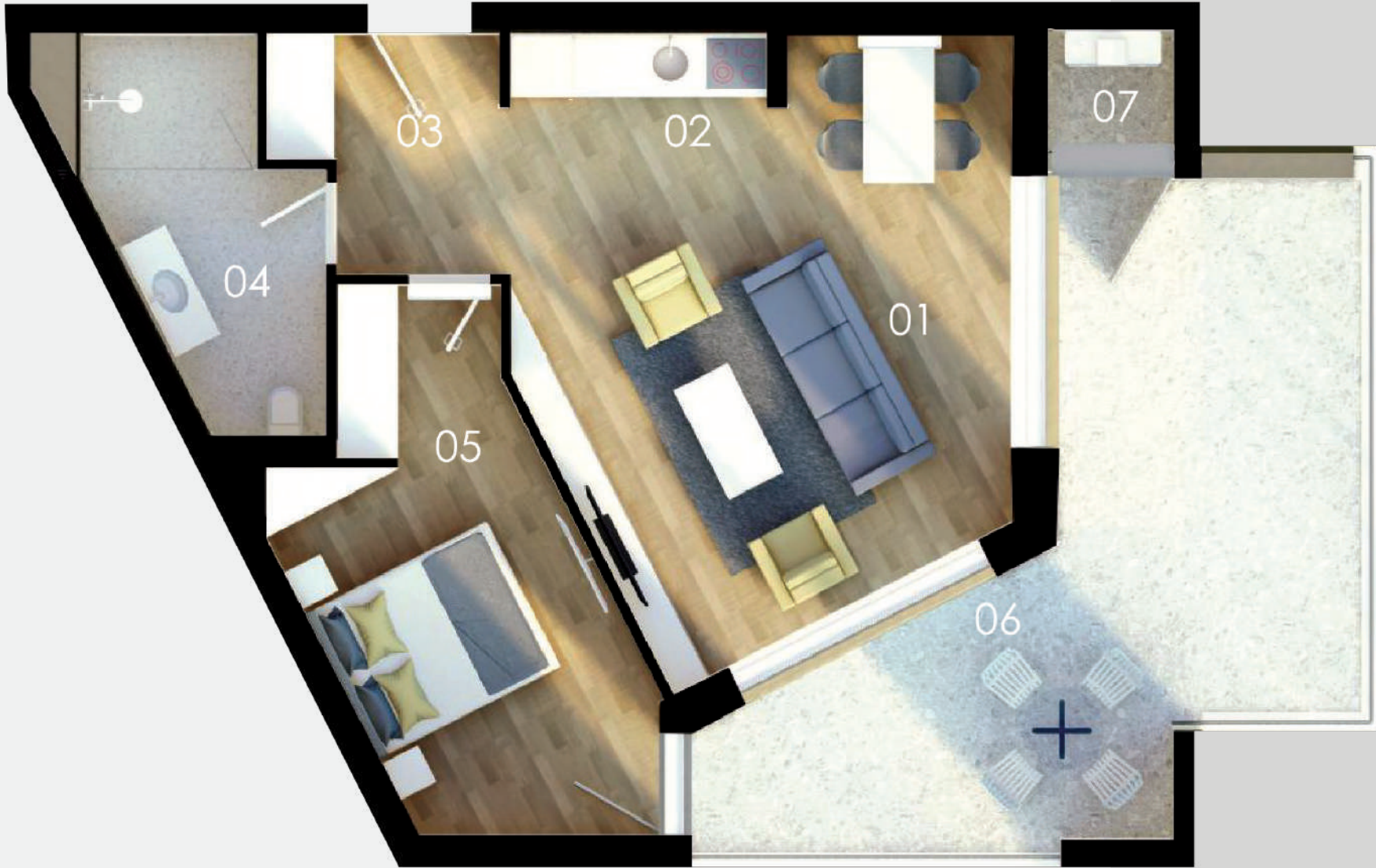
I - floor

II - floor

III - floor

IV - floor

V - floor



02 suite type 2

vuelo sobre bečići / 2023

ground floor

003 / 007 / 011

I - floor

104 / 109 / 110 / 113 / 114

II - sprat

203 / 206 / 207 / 208 / 211 / 212 / 215

III - floor

304 / 309 / 310 / 313 / 314

IV - floor

404 / 405 / 406 / 409 / 410 / 413

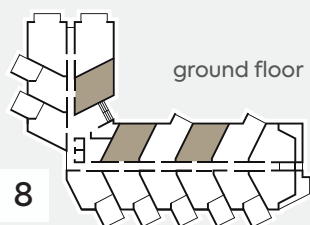
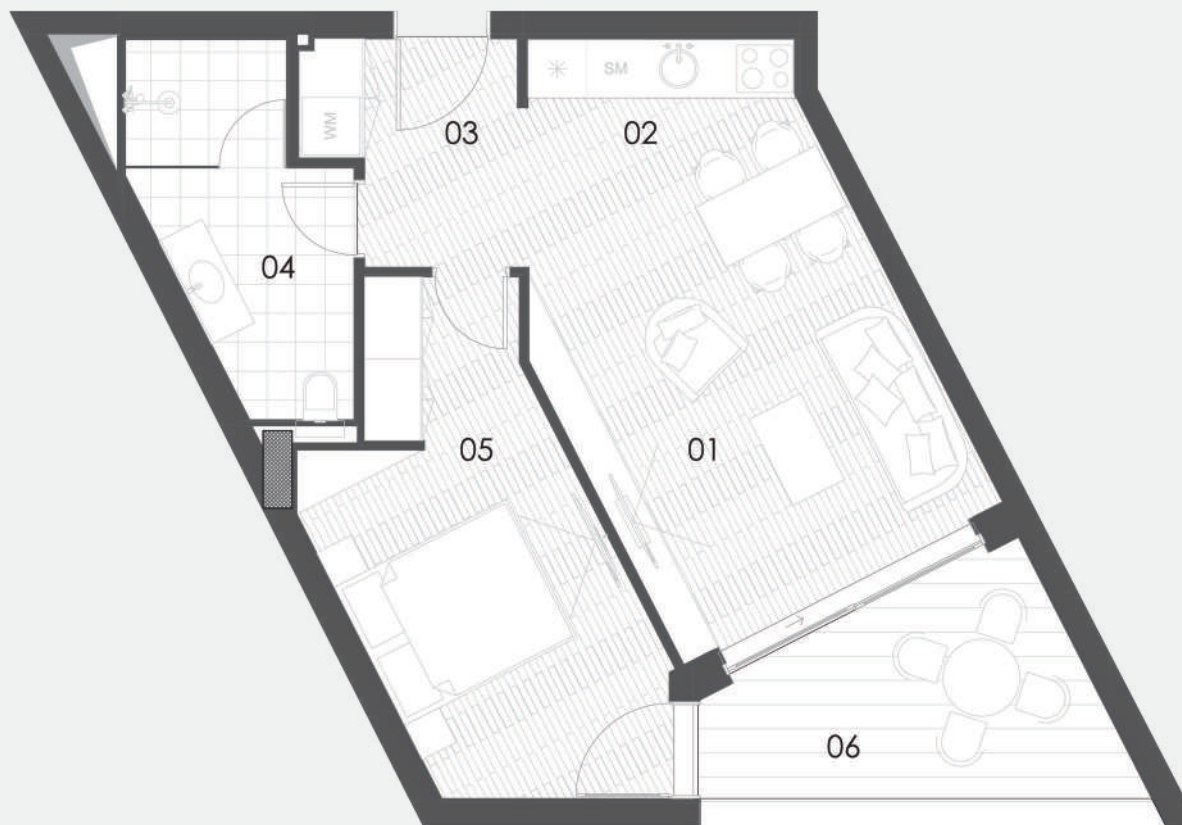
V - floor

505 / 506 / 509 / 510

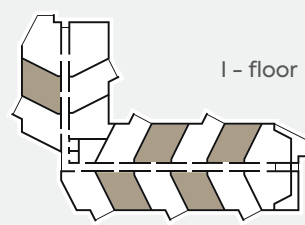
Total number of suites of this type | 30

| | |
|-----------------------------|---------------------|
| 01 Living and dining room | 19.30m ² |
| 02 Kitchen | 1.65m ² |
| 03 Hallway | 4.55m ² |
| 04 Bathroom | 6.75m ² |
| 05 Bedroom | 13.55m ² |
| 06 Balcony | 8.10m ² |

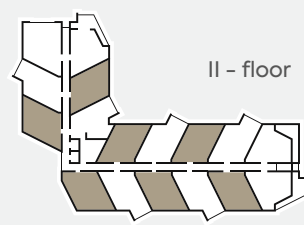
TOTAL 53.90m²



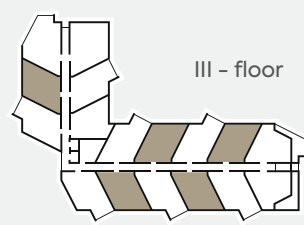
ground floor



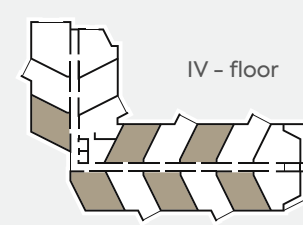
I - floor



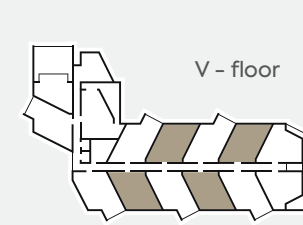
II - floor



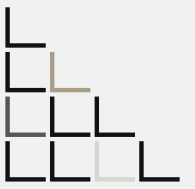
III - floor



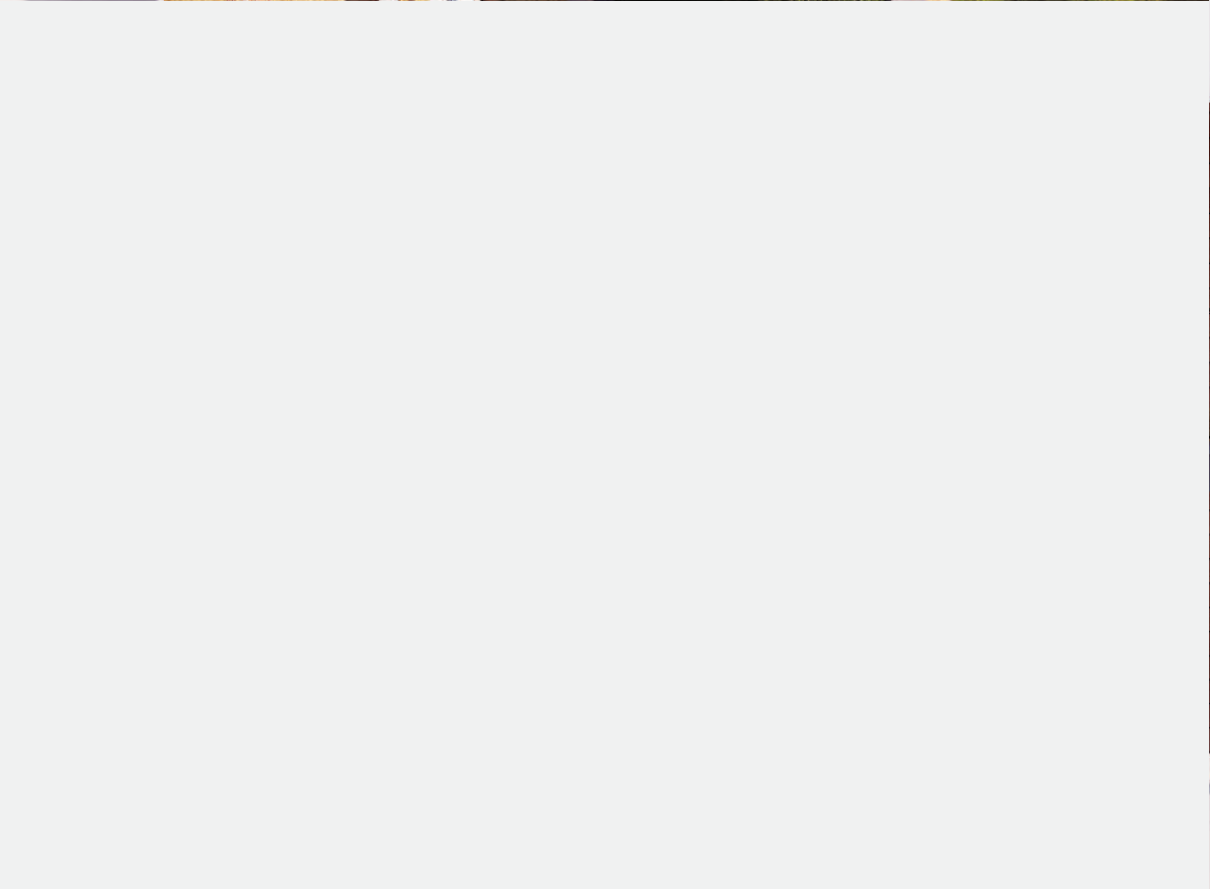
IV - floor



V - floor









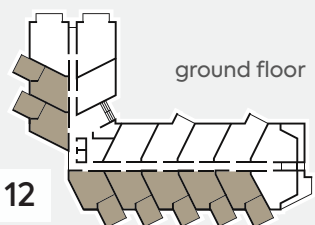
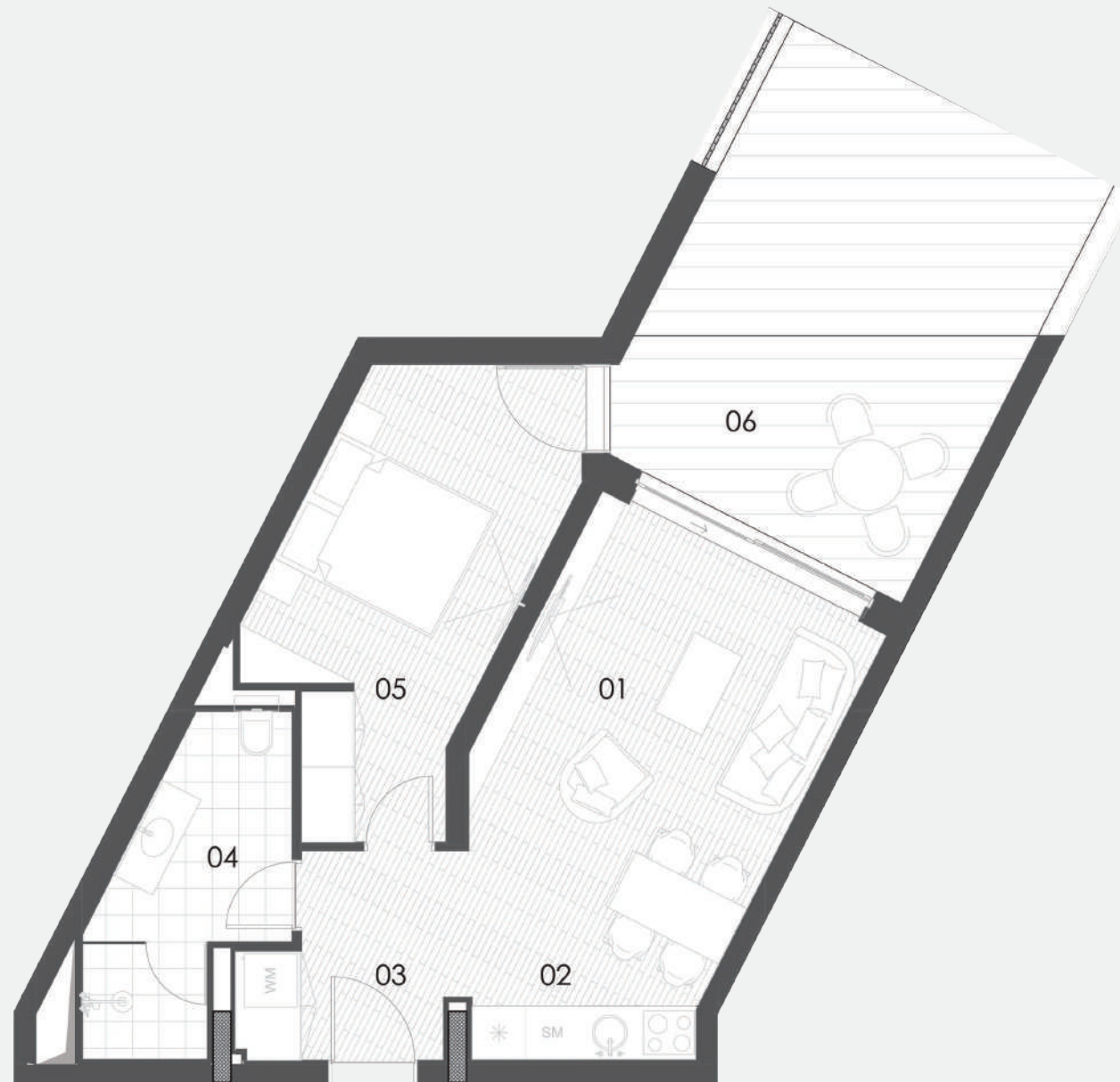
suite type 3

ground floor

004 / 005 / 006 / 008 / 010 / 012 / 014

Total number of suites of this type | 7

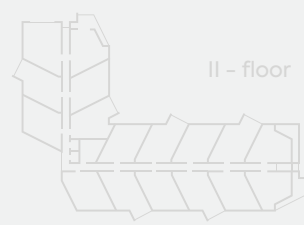
| | |
|-----------------------------|---------------------------|
| 01 Living and dining room | 18.75m ² |
| 02 Kitchen | 1.50m ² |
| 03 Hallway | 4.65m ² |
| 04 Bathroom | 6.40m ² |
| 05 Bedroom | 13.40m ² |
| 06 Balcony | 31.45m ² |
| TOTAL | 76.15m² |



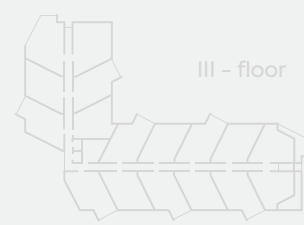
ground floor



I - floor



II - floor



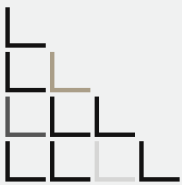
III - floor



IV - floor



V - floor





suite type 4

ground floor

009 / 013

I - floor

103 / 106 / 107 / 108 / 111 / 112 / 115

II - floor

204 / 209 / 210 / 213 / 214

III - floor

303 / 306 / 307 / 308 / 311 / 312 / 315

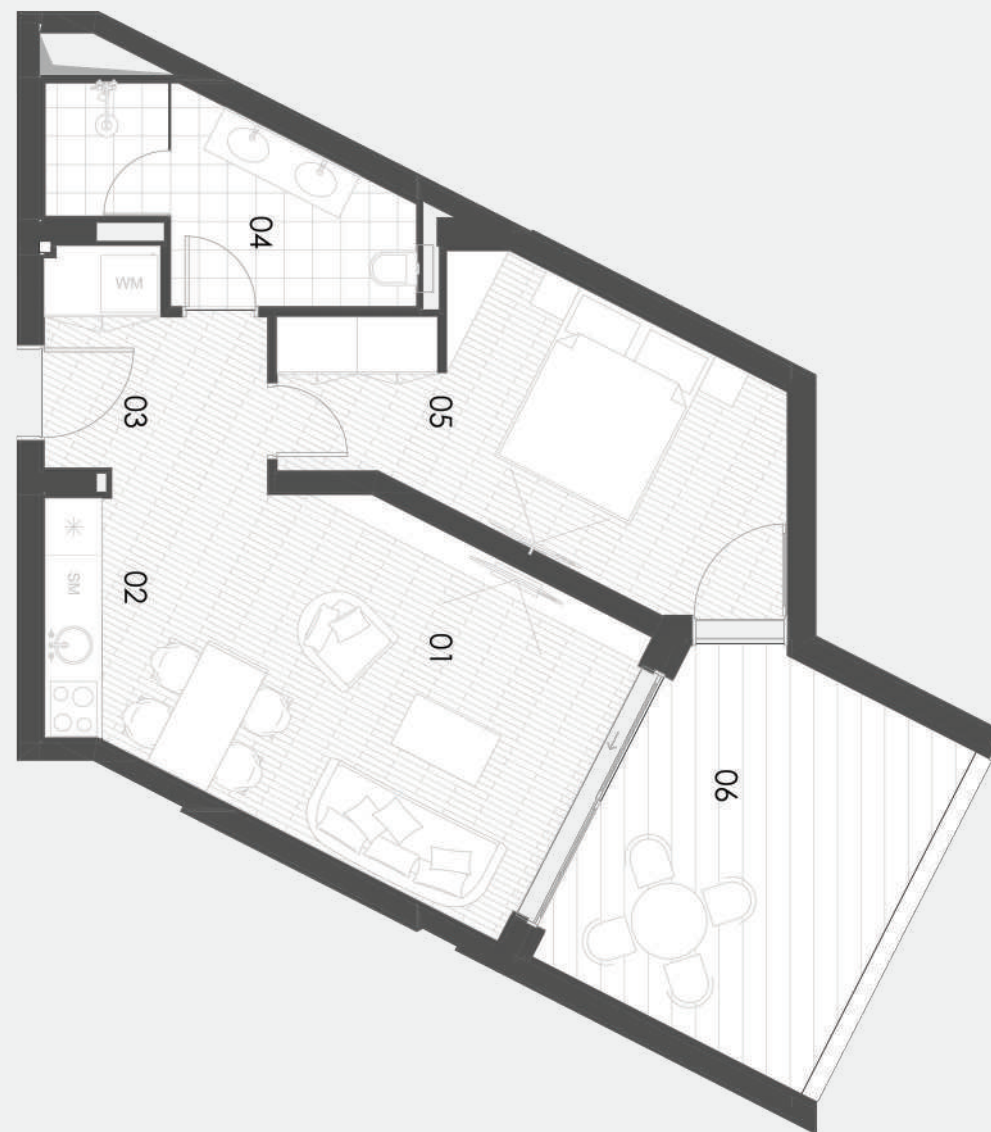
IV - floor

407 / 408 / 411 / 412

V - floor

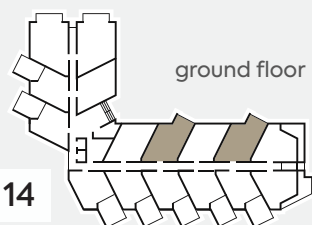
503 / 504 / 507 / 508 / 511

Total number of suites of this type | 30

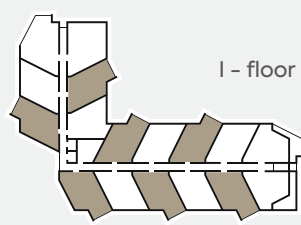


| | |
|-----------------------------|---------------------|
| 01 Living and dining room | 19.30m ² |
| 02 Kitchen | 1.70m ² |
| 03 Hallway | 4.65m ² |
| 04 Bathroom | 6.05m ² |
| 05 Bedroom | 13.50m ² |
| 06 Balcony | 13.55m ² |

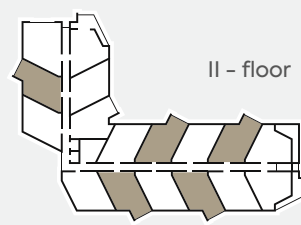
TOTAL 58.75m²



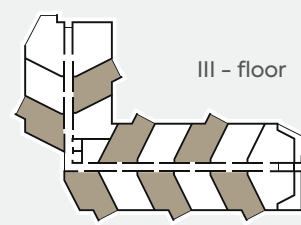
ground floor



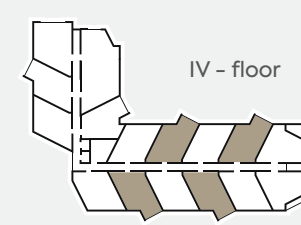
I - floor



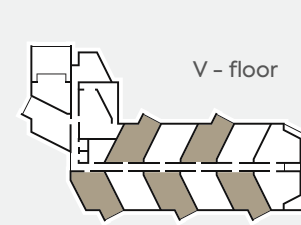
II - floor



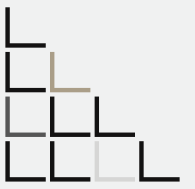
III - floor



IV - floor



V - floor





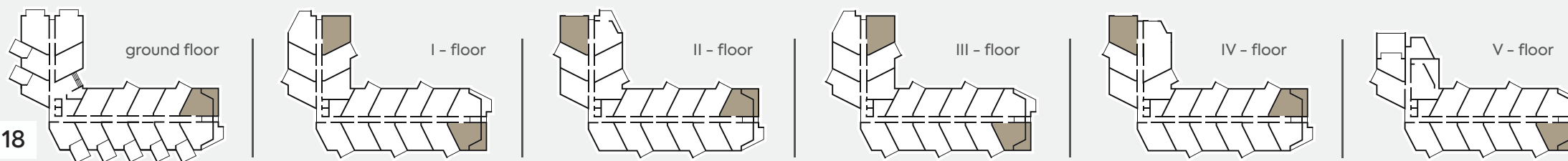


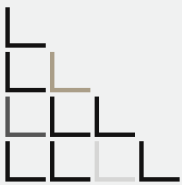
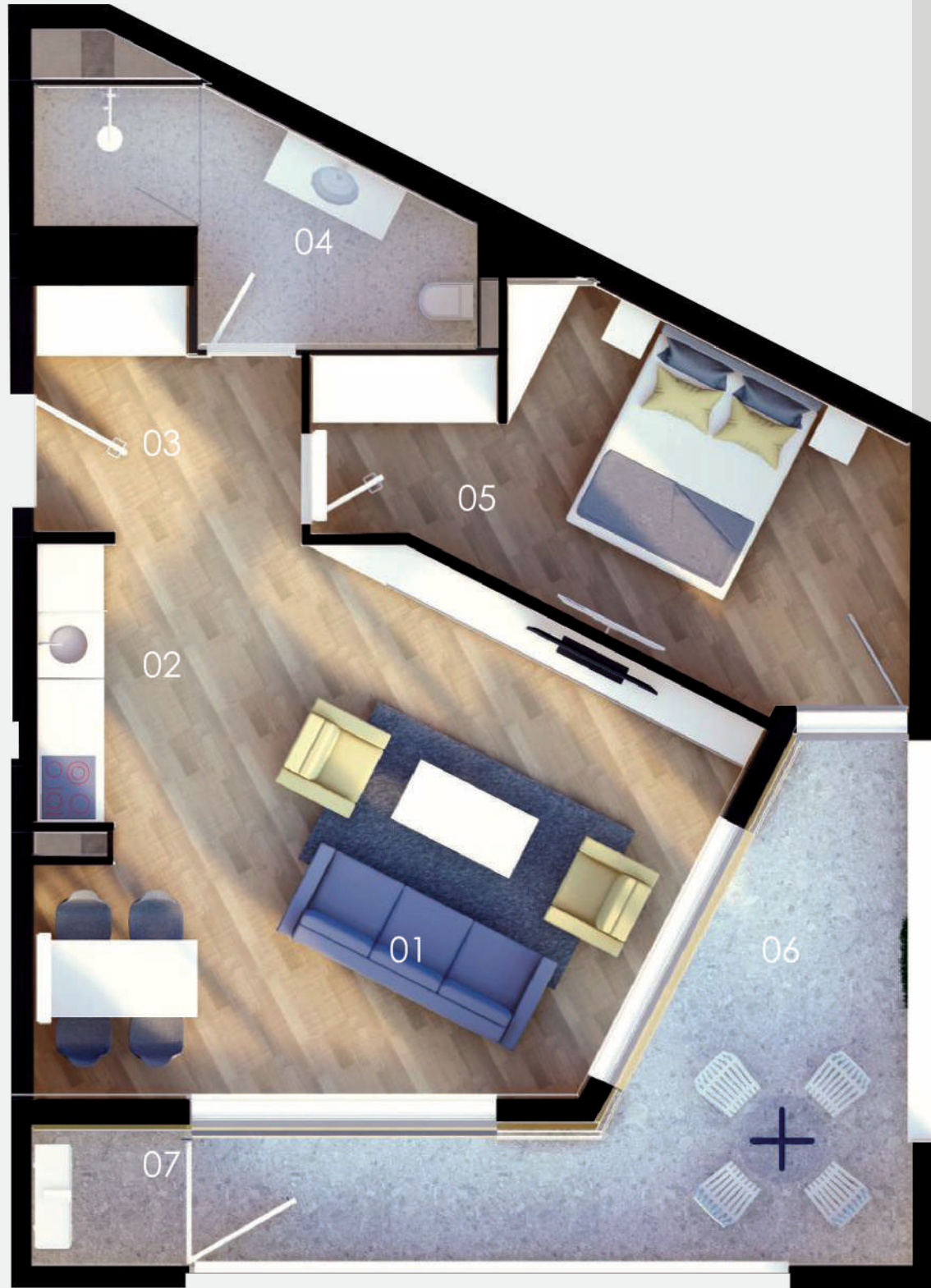
05 suite type 5

ground floor I - floor II - floor III - floor IV - floor V - floor
 015 101 / 117 202 / 216 301 / 317 414 513

Total number of suites of this type | 9

| | |
|-----------------------------|---------------------------|
| 01 Living and dining room | 25.55m ² |
| 02 Kitchen | 1.50m ² |
| 03 Hallway | 4.65m ² |
| 04 Bathroom | 6.05m ² |
| 05 Bedroom | 13.50m ² |
| 06 Balcony | 13.80m ² |
| 07 Storage | 1.70m ² |
| TOTAL | 66.75m² |





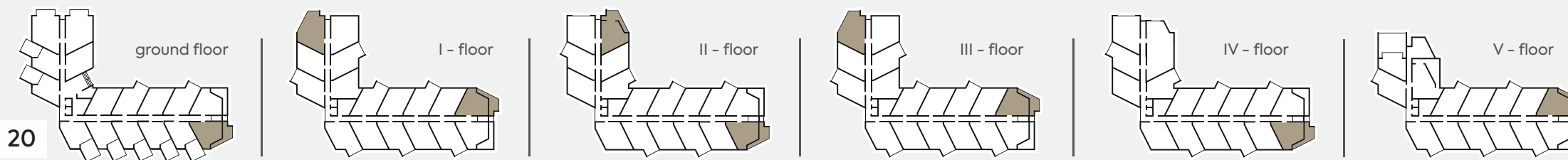
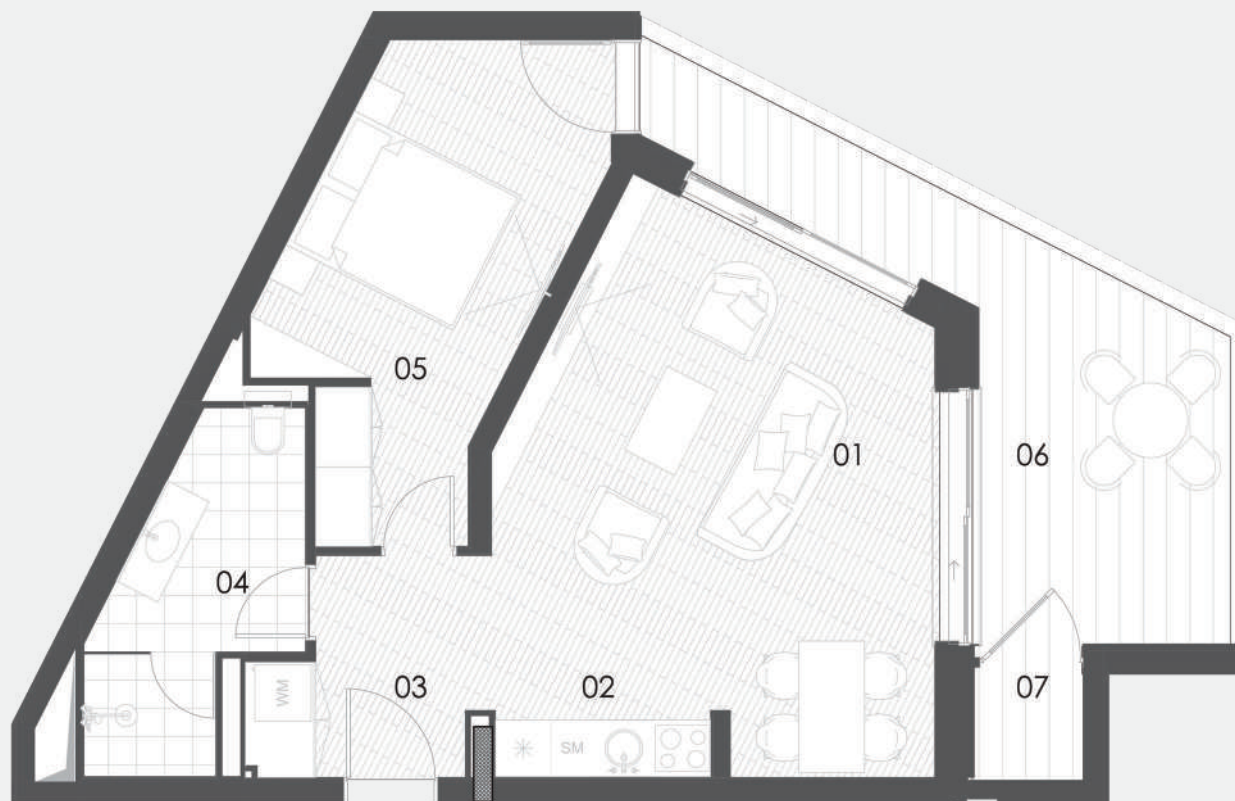


suite type 6

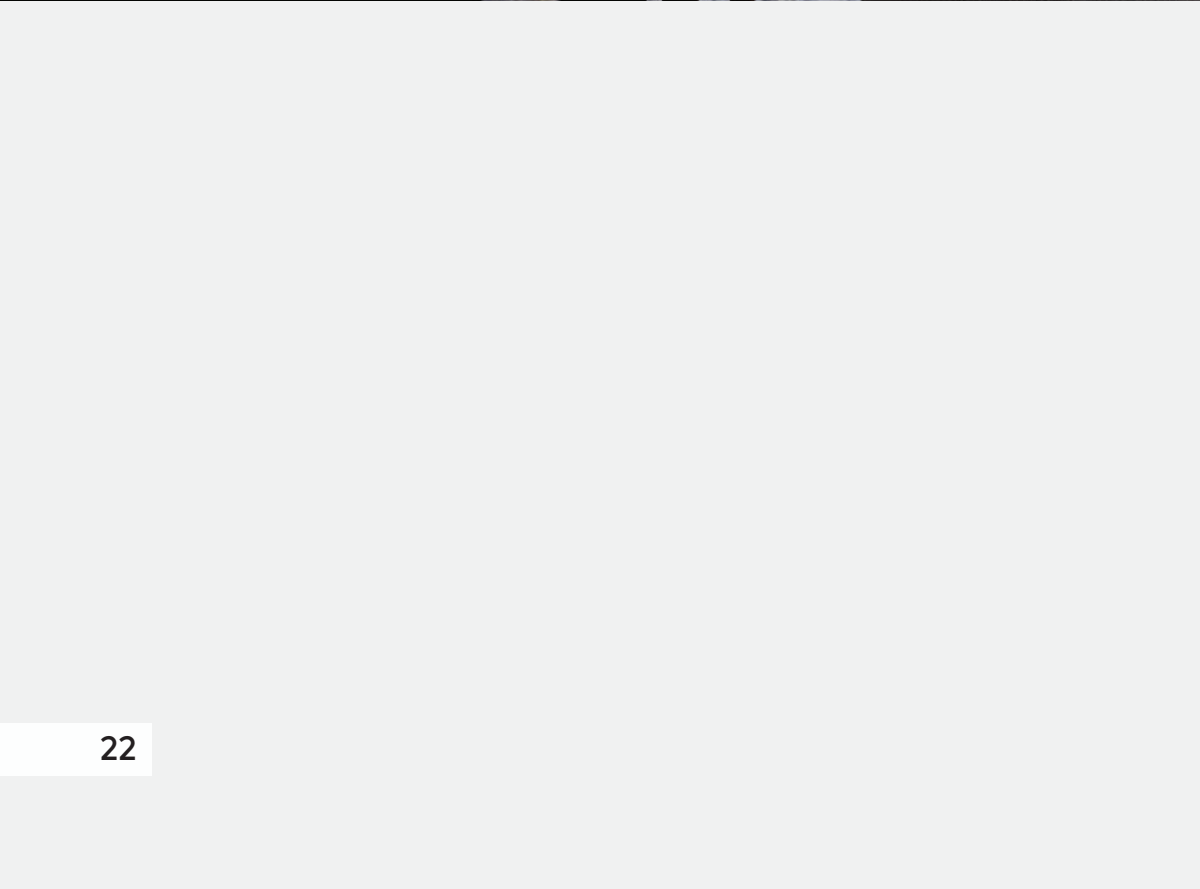
| ground floor | I - floor | II - floor | III - floor | IV - floor | V - floor |
|--------------|-----------|------------|-------------|------------|-----------|
| 016 | 102 / 116 | 201 / 217 | 302 / 316 | 415 | 512 |

Total number of suites of this type | 9

| | |
|-----------------------------|---------------------------|
| 01 Living and dining room | 24.50m ² |
| 02 Kitchen | 1.40m ² |
| 03 Hallway | 4.65m ² |
| 04 Bathroom | 6.40m ² |
| 05 Bedroom | 13.40m ² |
| 06 Balcony | 16.20m ² |
| 07 Storage | 1.70m ² |
| TOTAL | 68.25m² |







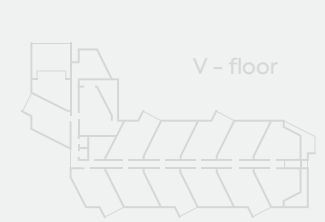
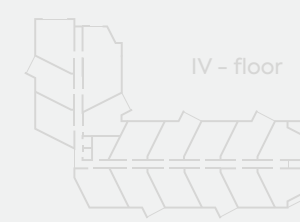
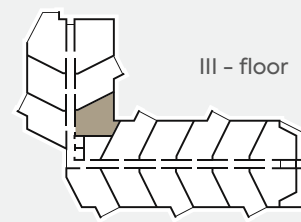
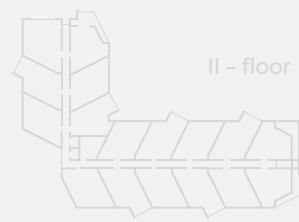
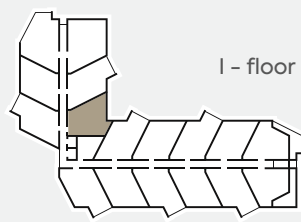
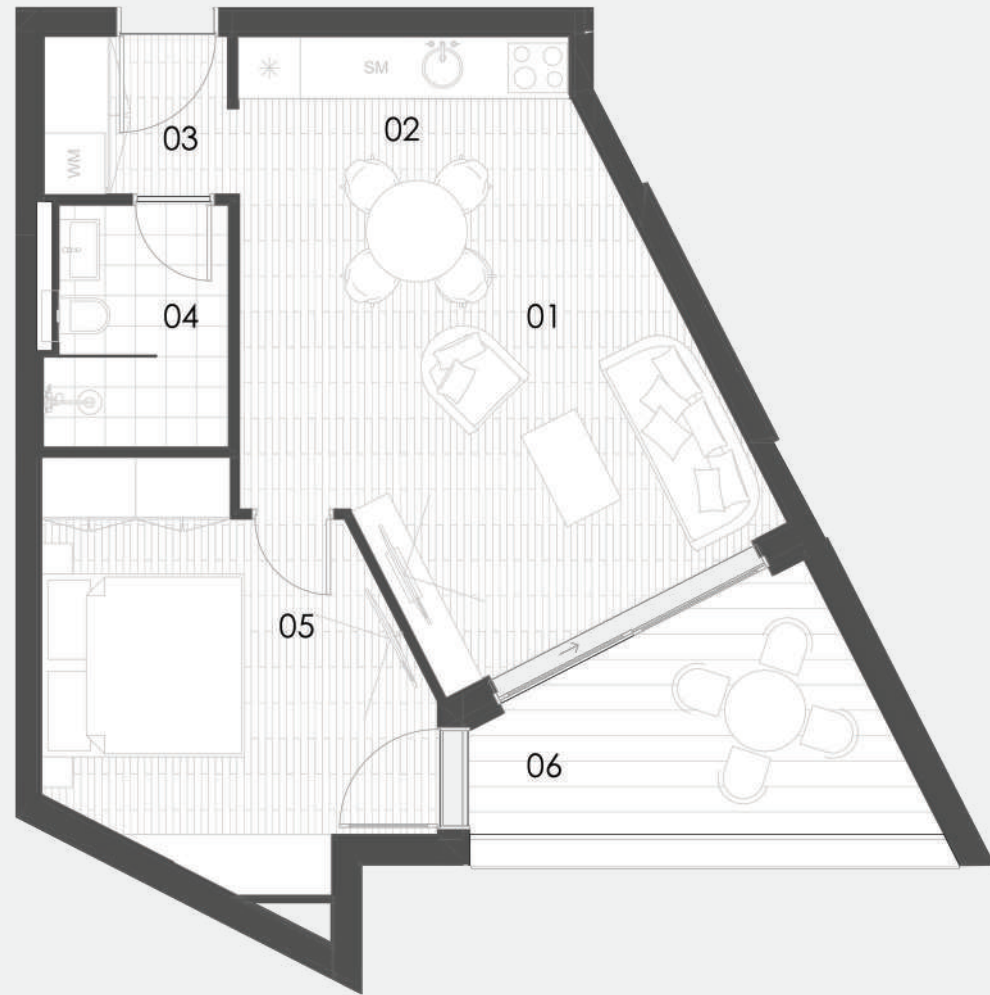


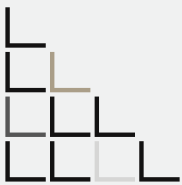
07 suite type 7

I - floor III - floor
105 305

Total number of suites of this type | 2

| | |
|-----------------------------|---------------------------|
| 01 Living and dining room | 21.70m ² |
| 02 Kitchen | 1.95m ² |
| 03 Hallway | 2.90m ² |
| 04 Bathroom | 4.10m ² |
| 05 Bedroom | 13.15m ² |
| 06 Balcony | 8.10m ² |
| TOTAL | 51.90m² |







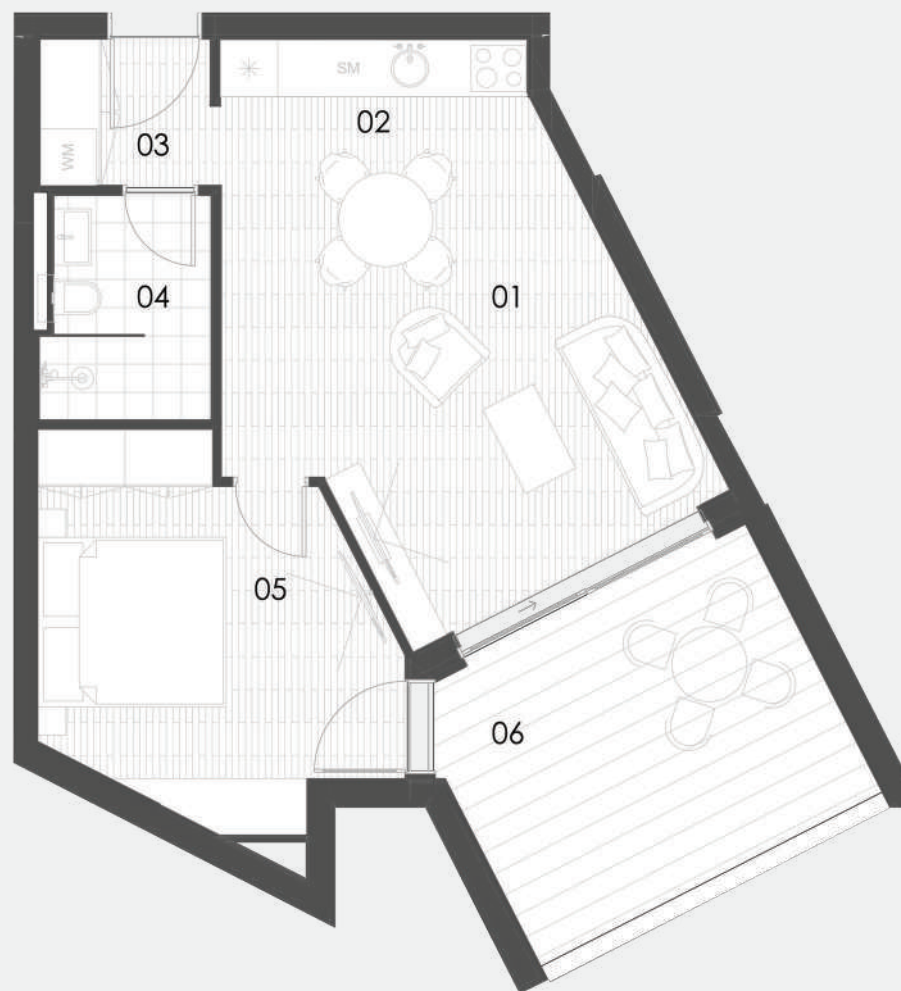
suite type 8

II - floor IV - floor

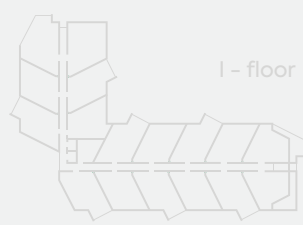
205 403

Total number of suites of this type | 2

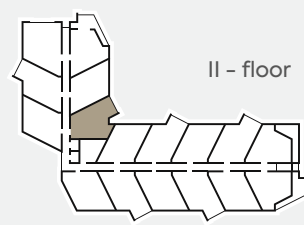
| | |
|-----------------------------|---------------------------|
| 01 Living and dining room | 21.70m ² |
| 02 Kitchen | 1.95m ² |
| 03 Hallway | 2.90m ² |
| 04 Bathroom | 4.10m ² |
| 05 Bedroom | 13.15m ² |
| 06 Balcony | 13.55m ² |
| TOTAL | 57.35m² |



ground floor



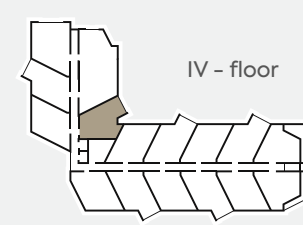
I - floor



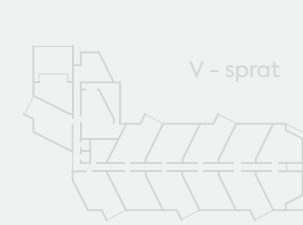
II - floor



III - floor



IV - floor



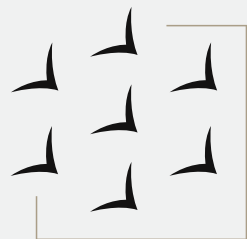
V - sprat







ALK



suites catalogue

Vuelo Sobre Bečići

ALK Montenegro

Bulevar Svetog Petra Cetinjskog 130
Podgorica, Montenegro

adress

+382 697 113 108 / +382 69 179 966

phone number

alkmontenegro@gmail.com

email



